

NEW

**HIOS®**

Automatic Screw Feeder

AUTOMATIC SCREW FEEDER

# HS SERIES

Easier to choose and install  
HS Series New Lineup Launched



**HERMES**  
TOOLS

HSV / HSV-RB    HS / HS-RB  
M1.0-3.0                      M3.5-5.0

# Reliable quality, easy to choose and excellent cost performance.

The HS Series has been reorganized in terms of functionality to achieve better cost performance. The product lineup has been revamped to make it easier to choose the right model and install while maintaining high quality.

## Supporting a wide variety of fine and precision

The HS Series has been redesigned to make it easier to choose the right model and offer better cost performance. It supports efficiency improvement through alignment and stable transport of screws, and meets the diverse needs of manufacturing sites with high-speed and space-saving design.



## Reducing human errors and improves production line efficiency

Realizes quicker and more stable screw supply than manual screw pickup. It uniformizes the process and reduces variations due to human factors to improve efficiency of the whole production line.



## High vibration damping performance and stable transport by take-out method

One unit can handle screws with different diameters. Various screws can be handled simply by replacing the rail\*. The rotary escaper prevents stacking of screws and precisely and smoothly supplies them. The vibrating rails are precisely controlled to increase the supply speed and contribute to efficiency.



\*Depending on the model, parts other than the rail have to be replaced.





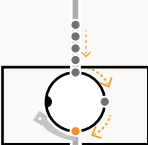
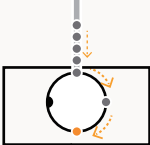

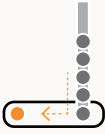
## Emergency recovery function and external linkage

In the event of an abnormality such as excessive screw insertion or clogging, the motor is rotated in reverse to automatically recover. Even if it is not possible to recover, safety is ensured by cutting off the power supply. In addition, all models are equipped with external output signals as standard, and can be linked to robots and counters to enhance expansion and reliability.

### External output signal

For manual operation	A signal outputs when a screw is taken out
For automatic machine	A signal outputs for presence/absence of a screw at the screw take-out section

## - New Lineup -


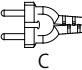

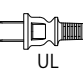
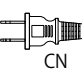
区分	HSV Series (for M1.0-3.0)		HS Series (for M3.5-5.0)	
	Manual Operation	Automated Machines	Manual Operation	Automated Machines
Model	HSV 	HSV-RB 	HS 	HS-RB 
Take out method	Rotary escaper 	Rotary escaper 	Linear rail 	Slide escaper 
Nominal Screw Diameter	Part No.	Part No.	Part No.	Part No.
M1.0	JHSV-10	JHSV-10RB	-	-
M1.2	JHSV-12	JHSV-12RB	-	-
M1.4	JHSV-14	JHSV-14RB	-	-
M1.7	JHSV-17	JHSV-17RB	-	-
M2.0	JHSV-20	JHSV-20RB	-	-
M2.3	JHSV-23	JHSV-23RB	-	-
M2.6	JHSV-26	JHSV-26RB	-	-
M3.0	JHSV-30	JHSV-30RB	-	-
M3.5	-	-	JHS-35	JHS-35RB
M4.0	-	-	JHS-40	JHS-40RB
M5.0	-	-	JHS-50	JHS-50RB
Maximum thread length	20mm	20mm	18mm	18mm
Screw capacity	80cc	80cc	150cc	150cc
Cycle time	-	0.9sec	-	1.5sec
Overload protection function	●	●	●	●
External output signal	●	●	●	●
Power supply	Input: AC100-240V 50/60Hz Output: DC15V 2.4A			
Weight (including rail)	3.0Kg	3.0Kg	3.7Kg	4.4Kg
External dimensions W x D x H (mm)	123×181×146	123×181×146	130×215×139	134×274×139

### Order Guide

When placing an order, please specify the product Part No. from the Model Selection Table and the corresponding Plug Code for your region from the Plug Code List. \* Insert a hyphen (-) between the Part No. and the Plug Code.

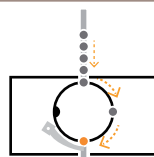
Part.No.	Hyphen	Plug Code
J H S - 1 7 R B	-	U S A
Fixed Model HSV or HS		Plug Code
Nominal Diameter Screw Numbers only (M1.7⇒17)		Type Manual → blank Automatic → RB

### Plug Code List

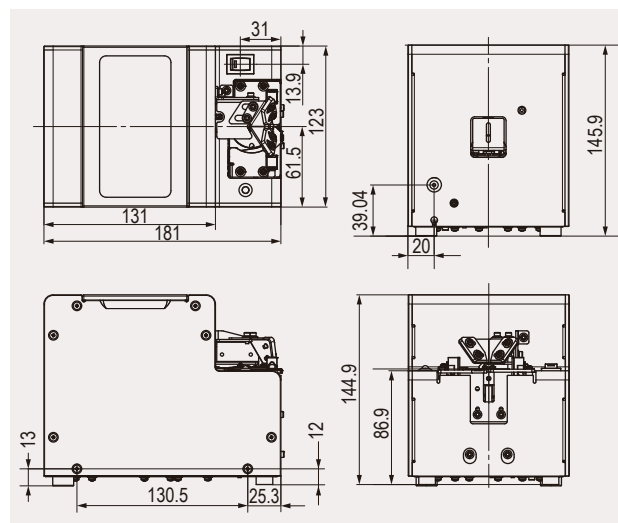
Plug Code	PSE	EUHK	UKSP	USA	CN	CN-E
Region	Japan	Europe	UK/ Ireland/ Malaysia	North America	China	Thailand/ Philippines
Plug	 PSE	 C	 BF	 UL	 CN	

For manual  
operation  
**HSV**

Supported Thread length <b>Max. 20mm</b>	Supported screw diameter <b>M1.0-M3.0</b>	Capacity <b>80cc</b>	Take out method <b>Rotary escaper</b>
--	---	-------------------------	--



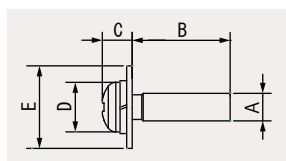
- Rail replacement type that supports 8 types of screw diameters of M1.0-M3.0 with 1 unit.
- Uses a rotary escaper at the screw take-out.
- Eliminates stacking of screws and stabilizes chucking.
- Speedy catches unstable flat head, washered, and thin head screws.



#### Specifications

Thread length (max.)	Screw capacity	Overload protection recovery	Power supply (AC adapter)	External dimensions W x D x H (mm)	Weight	Supported screw head shape		Accessories
20mm	80cc	In the case of overload, reverse. After recovery, normal rotation	Input: AC100-240V 50/60Hz Output: DC15V2.4A	123×181×146	3.0kg (including rail)	JHSV-10	Precision Screws	AC adapter, 1 hex wrench (width across flats 2 mm), 1 screwdriver for adjustment, 1 ground wire, and Instruction Manual
						JHSV-12		
						JHSV-14		
						JHSV-17		
						JHSV-20	Pan head, pan head (sems, double sems, washer head*1), binding, flat head, with hex hole*2	AC adapter Part No. JHVAD-280520009 (Adapter only) Plug Part No. Depending on an order code
						JHSV-23		
						JHSV-26		
						JHSV-30		

\*1: Max. diameter of washer E: 9 mm, thickness up to 0.35-1.0 mm \*2: Cannot be used with M2.3 and M2.6



#### Guide for Feedable Screws

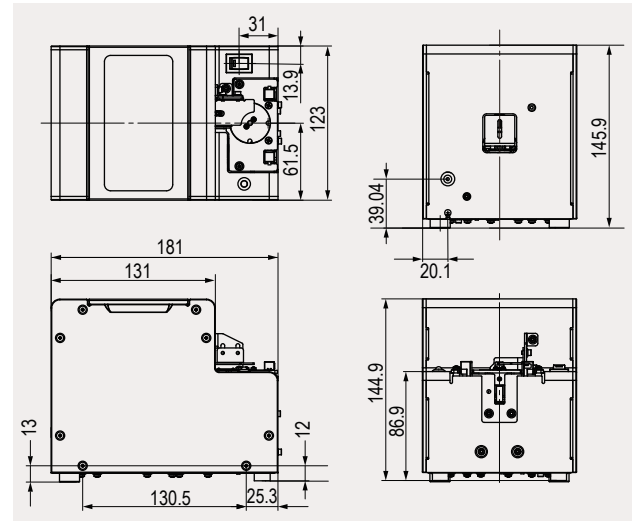
	Part No.	Nominal Screw diameter	Screw shank diameter A (Φ)	Screw head diameter D (Φ)	Screw head thickness C (mm)	Thread Length B (mm)	Replacement rail set Part No.	Replacement rail set contents
Model HSV	JHSV-10	M1.0	0.9-0.95	1.8-4.5	0.35-1.0	1.6-10	JHSV-R10S-280402000	
	JHSV-12	M1.2	1.1-1.15	1.8-4.5	0.35-1.0	1.9-10	JHSV-R12S-280402103	
	JHSV-14	M1.4	1.3-1.4	2.0-4.5	0.35-1.0	2.2-10	JHSV-R14S-280402206	
	JHSV-17	M1.7	1.6-1.7	2.0-4.5	0.35-1.0	2.7-10	JHSV-R17S-280402309	
	JHSV-20	M2.0	1.9-2.1	3.0-6.0	0.35-4.5	3.2-20	JHSV-R20S-280402402	
	JHSV-23	M2.3	2.2-2.4	3.3-6.0	0.35-4.5	3.7-20	JHSV-R23S-280402505	
	JHSV-26	M2.6	2.5-2.7	3.6-6.0	0.35-4.5	4.2-20	HSV-R26S-280402608	
	JHSV-30	M3.0	2.9-3.2	4.0-6.0	0.35-4.5	4.8-20	JHSV-R30S-280402701	

### For automated machine

# HSV-RB

Supported Thread length <b>Max. 20mm</b>	Supported screw diameter <b>M1.0-M3.0</b>	Capacity <b>80cc</b>	Takt time <b>0.9sec</b>	Take out method <b>Rotating escaper</b>
---	--	-------------------------	----------------------------	--

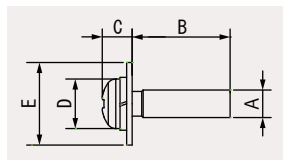
- Rail replacement type that supports 8 types of screw diameters of M1.0-M3.0 with 1 unit.
- Uses a rotary escaper at the screw take-out.
- Eliminates stacking of screws and stabilizes chucking.
- Speedy catches unstable flat head, washered, and thin head screws.
- Supports suction-type screwdrivers.



#### Specifications

Thread length (max.)	Screw capacity	Overload protection recovery	Power supply (AC adapter)	External dimensions W x D x H (mm)	Weight	Supported screw head shape		Accessories
20mm	80cc	In the case of overload, reverse. After recovery, normal rotation	Input: AC100-240V 50/60Hz Output: DC15V2.4A	123×181×146	3.0kg (including rail)	JHSV-10RB	Precision Screws	AC adapter, 1 hex wrench (width across flats 2 mm), 1 screwdriver for adjustment, 1 ground wire, and Instruction Manual
						JHSV-12RB		
						JHSV-14RB		
						JHSV-17RB		
						JHSV-20RB	Pan head, pan head (sems, double sems, washer head*1), binding, flat head, with hex hole*2	AC adapter Part No. JHVAD-280520009 (Adapter only)  Plug Part No. Depending on an order code
						JHSV-23RB		
						JHSV-26RB		
						JHSV-30RB		

\*1: Max. diameter of washer E: 9 mm, thickness up to 0.35-1.0 mm \*2: Cannot be used with M2.3 and M2.6



#### Guide for Feedable Screws

	Part No.	Nominal Screw diameter	Screw shank diameter A (Φ)	Screw head diameter D (Φ)	Screw head thickness C (mm)	Thread Length B (mm)	Replacement rail set Part No.	Screw Size Designation
Model HSV-RB	JHSV-10RB	M1.0	0.9-0.95	1.8-4.5	0.35-1.0	1.6-10	JHSVRB-R10S-280401009	
	JHSV-12RB	M1.2	1.1-1.15	1.8-4.5	0.35-1.0	1.9-10	JHSVRB-R12S-280401102	
	JHSV-14RB	M1.4	1.3-1.4	2.0-4.5	0.35-1.0	2.2-10	JHSVRB-R14S-280401205	
	JHSV-17RB	M1.7	1.6-1.7	2.0-4.5	0.35-1.0	2.7-10	JHSVRB-R17S-280401308	
	JHSV-20RB	M2.0	1.9-2.1	3.0-6.0	0.35-4.5	3.2-20	JHSVRB-R20S-280401401	
	JHSV-23RB	M2.3	2.2-2.4	3.3-6.0	0.35-4.5	3.7-20	JHSVRB-R23S-280401504	
	JHSV-26RB	M2.6	2.5-2.7	3.6-6.0	0.35-4.5	4.2-20	JHSVRB-R26S-280401607	
	JHSV-30RB	M3.0	2.9-3.2	4.0-6.0	0.35-4.5	4.8-20	JHSVRB-R30S-280401700	

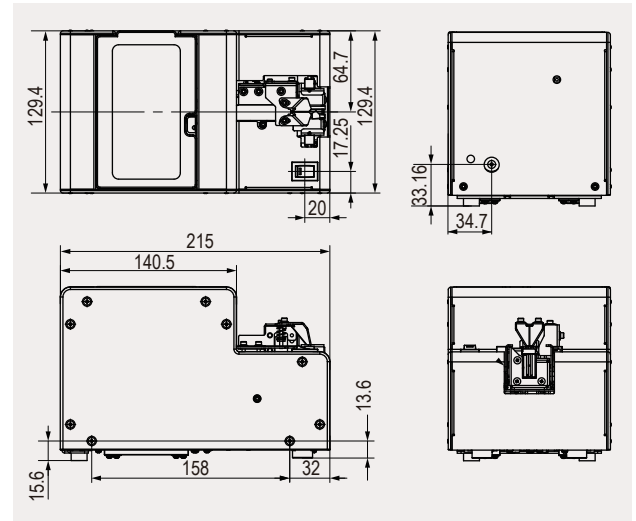


For manual  
operation  
**HS**

Supported Thread length <b>Max. 18mm</b>	Supported screw diameter <b>M3.5-5.0</b>	Capacity <b>150cc</b>	Take out method <b>Linear rail</b>
---	---	--------------------------	---------------------------------------



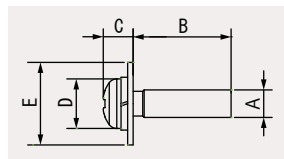
- Rail replacement-type that supports 3 types of screw diameters of M3.5-M5.0 with 1 unit.
- Large capacity type that can stock approx. 150CC screws.



## Specifications

Thread length (max.)	Screw capacity	Overload protection recovery	Power supply (AC adapter)	External dimensions W x D x H (mm)	Weight	Supported screw head shape		Accessories
18mm	150cc	In the case of overload, reverse. After recovery, normal rotation	Input: AC100-240V 50/60Hz Output: DC15V2.4A	130×215×139	3.7Kg (including rail)	JHS-35	Pan head, pan head (sems, double sems, washer head*1), binding, flat head, with hex hole*2	AC adapter, 1 hex wrench (width across flats 2 mm), 1 screwdriver for adjustment, 1 ground wire, and Instruction Manual  AC adapter Part No. JHVAD-280520009 (Adapter only)  Plug Part No. Depending on an order code
						JHS-40		
						JHS-50		

\*1: Washer thickness up to 0.35-1.0 mm \*2: Cannot be used with hex socket type for M3.5



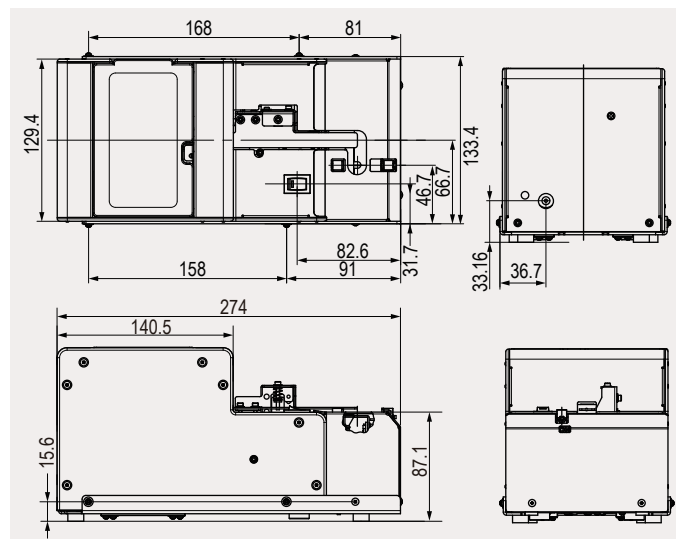
## Guide for Feedable Screws

	Part No.	Nominal Screw diameter	Screw shank diameter A (Φ)	Screw head diameter D (Φ)	Washer Diameter (E)	Screw head thickness C (mm)	Thread Length B (mm)	Replacement rail set Part No.	Screw Size Designation
Model HS	JHS-35	M3.5	3.3-3.7	4.8-8.0	4.8-12	0.5-8.0	5.6-18	JHS-R35S-283401400	
	JHS-40	M4.0	3.8-4.1	5.4-8.0	5.4-12	0.5-8.0	6.4-18	JHS-R40S-283401503	
	JHS-50	M5.0	4.8-5.1	6.2-10	6.2-12	0.5-8.0	8.0-18	JHS-R50S-283401606	

### For automated machine **HS-RB**

Supported Thread length <b>Max. 18mm</b> 	Supported screw diameter <b>M3.5-5.0</b> 	Capacity <b>150cc</b>	Takt time <b>1.5sec</b>	Take out method <b>Slide escaper</b> 
---	---	--------------------------	----------------------------	--

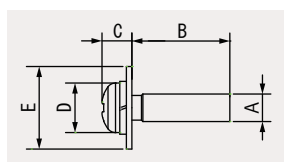
- Rail replacement-type that supports 3 types of screw diameters of M3.5-M5.0 with 1 unit.
- Large capacity type that can stock approx. 150CC screws.
- Supports suction-type screwdrivers.



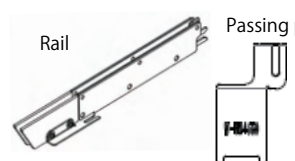

#### Specifications

Thread length (max.)	Screw capacity	Overload protection recovery	Power supply (AC adapter)	External dimensions W x D x H (mm)	Weight	Supported screw head shape		Accessories
18mm	150cc	In the case of overload, reverse. After recovery, normal rotation	Input: AC100-240V 50/60Hz Output: DC15V2.4A	134×274 × 139	4.4Kg (including rail)	JHS-35RB	Pan head, pan head (sems, double sems, washer head*1), binding, flat head, with hex hole*2	AC adapter, 1 hex wrench (width across flats 2 mm), 1 screwdriver for adjustment, 1 ground wire, and Instruction Manual  AC adapter Part No. JHVAD-280520009 (Adapter only)  Plug Part No. Depending on an order code
						JHS-40RB		
						JHS-50RB		

\*1: Washer thickness up to 0.4-1.0 mm \*2: Cannot be used with hex socket type for M3.5



#### Guide for Feedable Screws

	Part No.	Nominal Screw diameter	Screw shank diameter A (Φ)	Screw head diameter D (Φ)	Washer Diameter (E)	Screw head thickness C (mm)	Thread Length B (mm)	Replacement rail set Part No.	Screw Size Designation
Model HS-RB	JHS-35RB	M3.5	3.3-3.7	4.8-8.0	4.8-12	0.5-8.0	5.6-18	JHSRB-R35S-281401404	 Rail Passing plate  Rail Stopper
	JHS-40RB	M4.0	3.8-4.1	5.4-8.0	5.4-12	0.5-8.0	6.4-18	JHSRB-R40S-281401507	
	JHS-50RB	M5.0	4.8-5.1	6.2-10	6.2-12	0.5-8.0	8.0-18	JHSRB-R50S-281401600	



HERMESTOOLS Sp. z o.o.  
ul. Sarni Stok 73 a, 43-300 Bielsko-Biała, Polska; tel: +48 33 821 41 90-91  
[www.hermestools.eu](http://www.hermestools.eu)

**HIOS Inc.**

Head Office 1-35-1 Oshiage, Sumida-ku, Tokyo, 131-0045, Japan Phone: +81 (Japan) 36661-8828

Osaka Office / Nagoya Office / Yamagata Plant / HIOS (SHENZHEN) Co., LTD.

○ Please note that some of the specifications and appearance of the products may be changed for improvement without prior notice.

○ It is strictly prohibited to copy and use this product catalog without permission.

○ Information in this document is the latest as of November 2025 ○ Catalog No. HSEN(25A)



<https://hios.com>